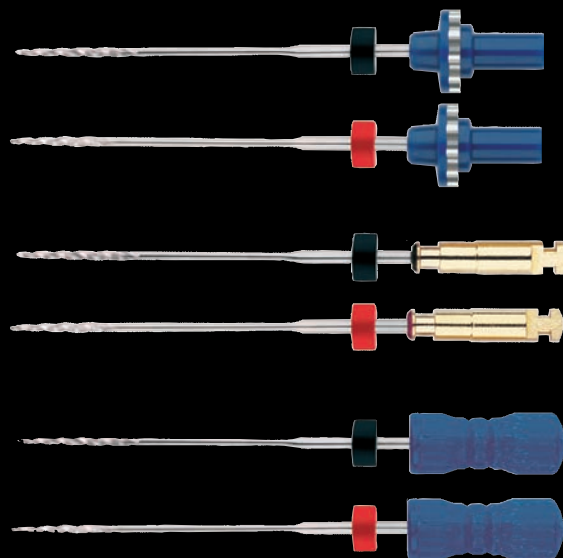


HERO Apical[®]

The efficient finishing files



*We invent,
you succeed!*

HERO Apical[®] for a comprehensive and

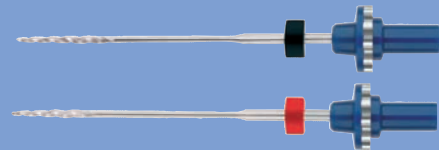
DEFINITION AND INDICATIONS

HERO Apical[®] are NiTi instruments used after the canal is prepared, following the normal sequence, (ideally with HERO Shaper[®]), when you need to enlarge the apical third. Use of HERO Apical[®] is indicated at the end of canal preparation, with a reducing contra-angle at a speed of 300 to 600 rpm or manually.

2 instruments are offered:

- .06 taper n° 30 HERO Apical[®] (black stop)
- .08 taper n°30 HERO Apical[®] (red stop).

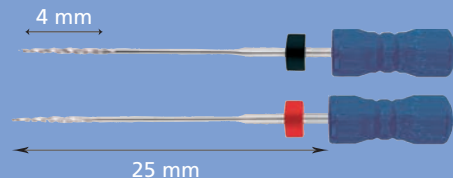
InGeT[®]



Classics

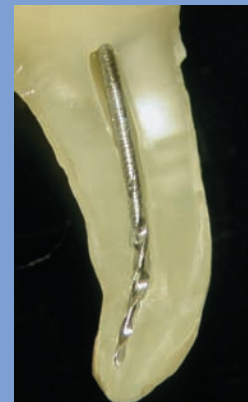


Manual



USE

- If there is root canal infection, in order to eliminate the dentine layers contaminated with bacteria and also to enable antiseptic solution and/or temporary medication to be applied.
- To make root filling easier:
 - Improve the root canal sealing by elimination of the superficial dentine layers that are in the process of mineralisation.
 - Easier penetration of the plugger in the apical third, particularly for heated vertical condensation techniques.
 - Significant reduction of risk of gutta percha extrusion beyond the apical limit.



successful root canal therapy!

PROTOCOL

- Both instruments are inserted, one after the other at the apical limit (Working Length) of the preparation. The resultant .08 tapered width ensures a uniform stop for the gutta percha.

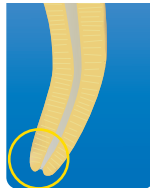
- ① .06 → WL
- ② .08 → WL



- In case of thin and curved roots, it might be necessary to use HERO Apical® in step back technique. So the progressively tapered canal does not weaken the root.

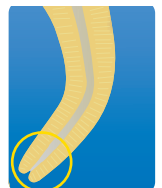
- For thin and curved roots (prepared with HERO Shaper® red sequence)

- .06 → WL
- .08 → WL-1 mm



- For very thin and very curved roots (prepared with HERO Shaper® yellow sequence)

- .06 → WL-1mm
- .08 → WL-2mm



OPERATING PROCEDURE

Under irrigation the instrument is placed at the desired length:

- At constant speed.
- Using light pressure. It is withdrawn from the canal whilst rotating.

Technical characteristics

- A high flexibility: no stop created and follows the apical constriction.
- An adapted cutting ability: perfect dentine excision.
- A great strength: avoids breakage.
- A reversed taper of the non-active part: avoids the risk of sudden bending behind the cutting part.
- A long pitch: increases the cutting action + the debris evacuation.
- A short cutting part (4 mm) connected to the handle through a fine, smooth and flexible shank.
- The instruments prepare the apical third only: reduced stress.

Advantages

- Efficient enlargement of the apical zone.
- Respect of the initial canal path.
- Respect of the apical constriction.
- Excellent debris evacuation.
- Complementary to HERO Shaper® and R-Endo® systems.

MICRO-MEGA[®]'s products

■ ENDODONTICS ■ OBTURATION ■ ■ HANDPIECES ■ ■ HYGIENE

HERO Shaper[®] Classics

R-Endo[®] InGeT[®]

HERO Shaper[®] InGeT[®]

R-Endo[®] Classics

ENDOFLARE[®] Classics

ENDOFLARE[®] InGeT[®]

HERO Apical[®] InGeT[®]

HERO Apical[®] Classics

MICRO-MEGA[®] France Distribution
5-12 rue du Tunnel
F - 25006 BESANÇON cedex
Tel. : +33 (0)3 81 54 42 36 - Fax : +33 (0)3 81 54 42 39
commercial@micro-mega.com



MICRO-MEGA[®] International Distribution
133 rue de Genève
CH - 1226 Thônex
Tel.: +41 (0)22 860 85 30 - Fax: +41 (0)22 860 85 31
mmid@micro-mega.com

www.micro-mega.com

10/07 - Ref. 60301449 - MICRO-MEGA reserves the right to modify the characteristics of its instruments without notice. Pictures non contractual.

PUBLICIS-KOUPRA

